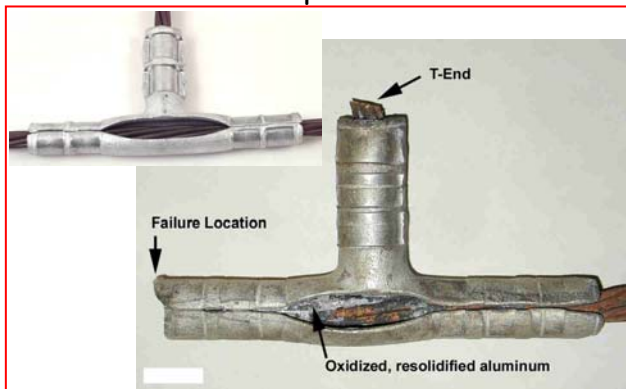


METALLURGICAL LABORATORY

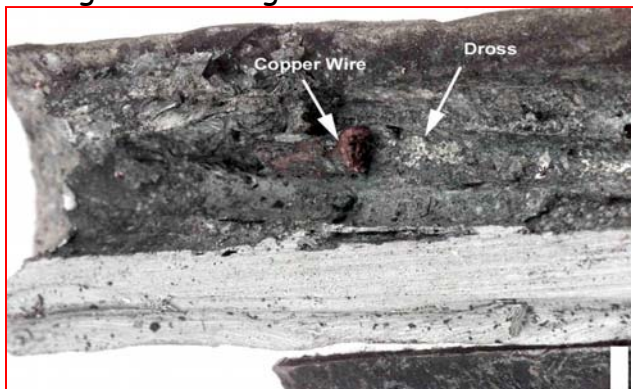
FAILURE ANALYSIS CASE STUDY

Description	Failure of T-Tap Assembly installed on a 69 KV - 437 Amp aboveground line
Problem	Determine whether the failure was an isolated incident or a systemic problem
Analysis	The failure occurred through a cascade that originated from inadequate clamping
Resolution & Recommendations	The failure was an isolated instance with potential to be system-wide if the clamping force was not correctly applied and monitored.

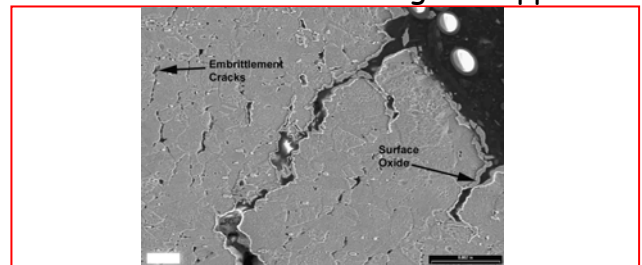
New and Failed T-Tap Assemblies



Arcing and Melting On the Inner Surface



Embrittlement and Cracking of Copper



Failure Cascade

